

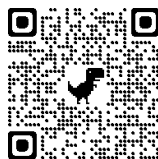


Welcome to « île des marinas »
Life is good here!



www.oportoducap.fr

villa@oportoducap.com



The word from the house owners



Dear guests,

We are delighted that you've decided to stay to our house « OPortoDuCap ».

We hope you will have a good stay in this unique place as we have been doing it ourselves for more than 40 years and we have decided to share it since this year. Thank you for your indulgence, we are beginners in the rental business... But please do not hesitate to send us all your remarks to improve the quality of your stay and the next tenants. Our email address is villa@oportoducap.com

This is your time. And your time is precious. That's why we've created this guidebook. Like all guide books or house manuals, it is loaded with some precious information that we have gathered for you.

Do not hesitate to contact Véronique, who welcomed you, if you have any question.

Please relax, unwind, have fun, and enjoy your stay!

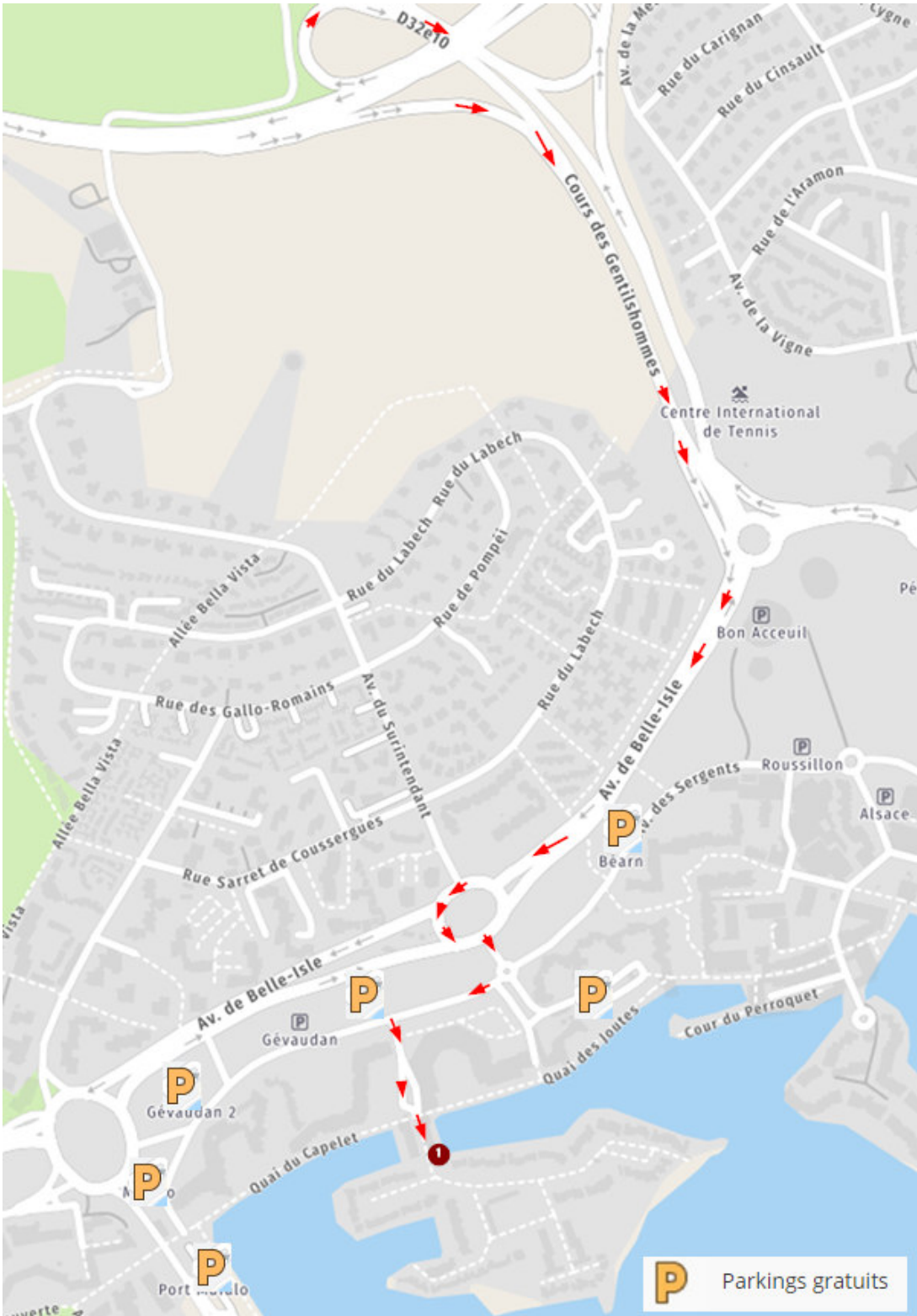
Richarde et Michel

Summary

How to get to the villa	4
Access Plan	4
Transports	5
Car Parking space	5
The arrival in the villa	6
The keys	6
Check-in and Check-Out Time	6
Check-out Process	6
How to pay the stay	7
The cleaning	7
The life in the villa	8
The plan	8
List of equipment in the villa	9
Use of equipment	10
Rules & Regulations	13
Practical information	14
Where can you go to shop ?	14
Where can you get fuel ?	14
Where can you get treatment ?	14
Other service	15
Useful numbers	15
Visit the region	16
Useful information	16
Places to visit	16
Where you can eat and go out	18
Regional culture	18

How to get to the villa

Access Plan



Address : 231 Rue du vents des dames, 34300 Le Cap d'Agde

Transports

- *By car*
Highway A9, 3 interchanges n°33 to 35 serve the destination
Highway A75, interchanges n°58 to 61 serve the destination
N9 from Béziers to Pézenas
D609 from Clermont l'Hérault
D612 from Béziers or Sète
D613 from Sète to Montagnac
- *By train*
Train station SNCF in Agde, Béziers, Sète
Several daily direct train connections all year long
- *By plane*
Béziers Airport - Cap d'Agde 13 km
www.beziers.aeroport.fr • Tél. +33 (0)4 67 809 909


Montpellier Méditerranée Airport 49,5 km
www.montpellier.aeroport.fr • Tél. +33 (0)4 67 20 85 00

Perpignan – Rivesaltes Airport 79,2 km
www.aeroport-perpignan.com • Tél. +33 (0)4 68 52 60 70
- *By autobus*
Cap Bus – information : www.capbus.fr • Tél. +33 (0)4 67 01 22 24
Hérault Transport - www.herault-transport.fr • Tél. +33 (0)4 34 88 89 99

Car parking space

We provide you a remote control allowing you to reach your private parking space (N° 79) on the île des marinas. (no trailer or camper)



If you have more than one vehicle, there are large free car parks ( on the map) nearby (note that some are closed on market days).

Parkings : Gévaudan1 (260 m) - Port Mafalo (325 m) - Gévaudan2 (331 m)

Arrival Information

The keys

You will have made contact with Véronique (06 52 36 51 00) before your arrival to set up a time to meet for the handover of the keys.

On your arrival, Véronique will be there to welcome you with a smile and spend a long time going over the household equipment and the things you need to know to have a good stay (gate, parking, bin location, etc...). She will be happy to share her good addresses with you.

We will be available for any questions/concerns throughout the rental period.

At the end of the rental period, we will collect the keys and check the accommodation for condition and cleanliness.

Check-in and Check-Out Time

Arrival times are flexible depending on the state of the marina when the previous tenants leave. If a cleaning crew is required, entry will be from 17:00.

Departure times are also flexible depending on your needs if the marina is left clean. In any case, the marina must be completely free at the latest 2 hours before the arrival of the next tenants.

Check-out Process

The list in this guidebook will allow you to make an inventory of the equipment. We ask you to make sure that everything is present and if anything is missing, please inform us immediately by e-mail at: villa@oportoducap.com.

Please inform Véronique (06 52 36 51 00) of your departure time so that we can carry out an inventory of fixtures on departure. The unit cost of replacing missing items is shown on the attached list. A fixed fee of 25 euros covering the costs of the replacement will be added to the price of the missing item.

Payment of the deposit (400 euros) is made by credit card. The deposit will be refunded within 3 weeks at the latest.

€ How to pay the stay?

Since you entered, you must have paid. We prefer payment by credit card via our partners. Sometimes we receive payments from reservations that come directly to us, usually by cheque. The tourist tax for the year 2021 is a maximum of 4,4€ per person per night (5,00 % of the price of the night divided by the number of occupants + additional tax of 10%. For example for a night at 200€ with 4 occupants including 2 children = $200/4 = 50 * 5\% = 2.5$ euros + 10% (Additional tax for the benefit of the Hérault departmental council) = $2.75€ \times 2$ adults = 5.50 € in total per night). People under 18 years old are exempt.

Find the rates and calculation method on <https://agde.taxesejour.fr/>

Cleaning

If you would like to have your home cleaned during or at the end of your stay, this is available at 80 € (to be paid at the time of booking). Otherwise, we ask that you leave the accommodation in the condition it was provided to you. How clean are you expected to leave the home? A good rule of thumb is that if your mother were to see the home upon your departure, she should not be embarrassed!

The bathroom must be spotless (no traces or products (soap, gel etc...) must remain on the sink, shower or toilet).

Don't forget to clean the fridge as well as the oven and the plancha; the fridge must be emptied of all perishable products. Clean and put away the dishes. Remember to empty the bins before leaving the premises.

Cleanliness will be checked at the check-out. If it is not perfect, we will arrange for a cleaner to come and clean the property at your expense (minimum 100 euros depending on the state of the accommodation) so that the next guests will find it as clean as when you arrived.

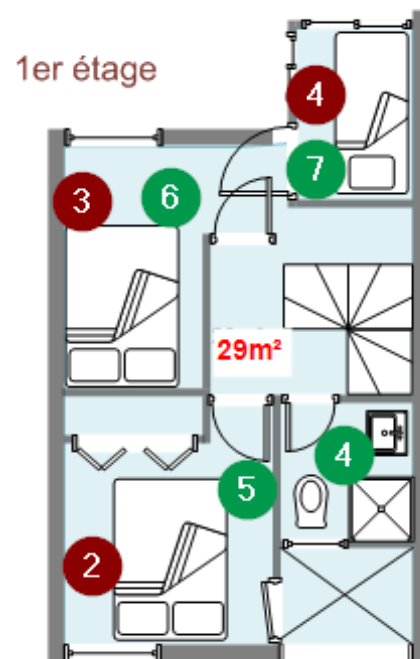
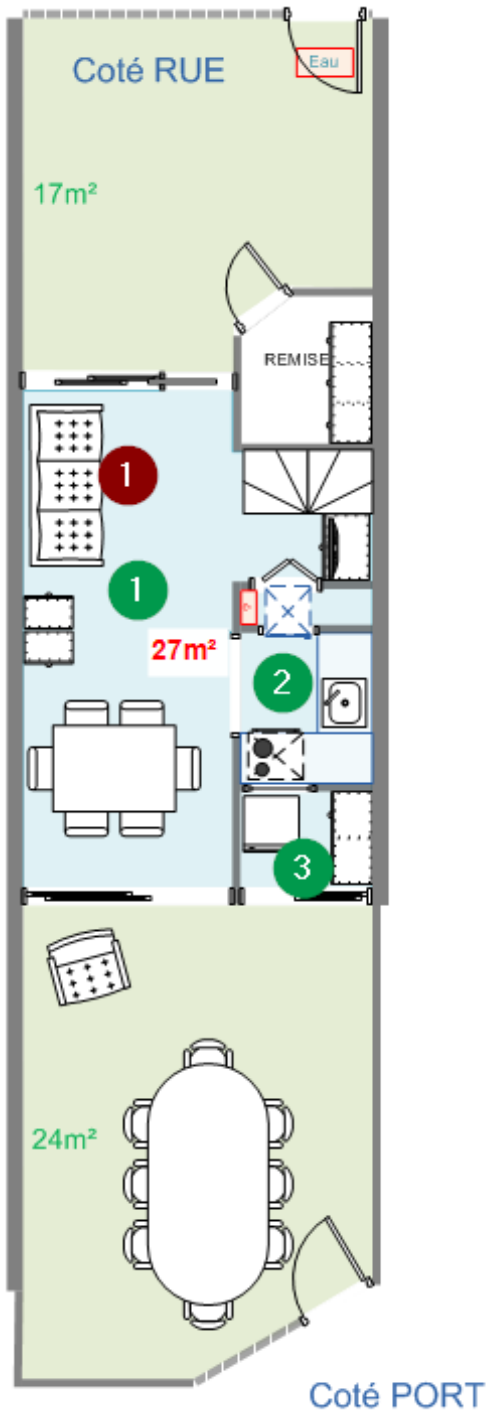
Bed linen and towels are not provided. You can bring your own, use a disposable linen kit **or rent some by Véronique (06 52 36 51 00)**

If you have taken the option of a disposable linen kit, remember to take them all off and dispose of them in the containers provided.

If you have used them, also remember to fold up the blankets and store them in the cupboards.

The life in the villa

The plan





List of equipment in the villa

 **The marina doesn't have an internet connection**

- 1 Lounge - living room**
- Sofa bed 2 seats
 - Chest of drawers
 - Table with table cloth - 6 chairs
 - TV stand
 - Flat screen TV TNT
 - Cupboard - Electrical panel
 - Ironing board

- 2 Kitchen**
- Fridgewith freezer
 - Oven
 - 2-burner ceramichob
 - Sink
 - Furnitures

- 3 Laundry**
- Washing machine
 - Clothesline
 - Furniture
 - Microwaveoven
 - Electric coffee maker
 - Plancha

- 4 Bathroom**
- Sink
 - Shower
 - Toilet

- 5 Bedroom 1**
- Closet
 - Double bed 140cm
 - Bedside

- 6 Bedroom 2**
- Closet
 - Double bed 140cm
 - Bedside

- 7 Bedroom 3**
- Simple bed 90cm
 - Closet

Terrace on the Port side

- Foldabledeckchair and mattress
- Table withtablecloth
- 8 chairs

Key sets : 1 remote control Island Access Gate, 1 set Street shutter + Street Door + Token Island Access Gate, 1 set Street Door, 1 set Laundry shutter + Laundry Door, 2 sets Laundry Door

Kitchen and household utensils : Frying pans, saucepans, drainers, dinner and dessert plates, bowls, cups, stemware, orangeade glasses, whisky glasses, pastis glasses, champagne flutes, forks, knives, large and small spoons, chopping boards, wooden and metal utensils, masher, oven dish, pie dish, colander, can opener, salad bowls, dishes, waffle iron, grinder, mixer, lemon squeezer, cleaning kit (broom, brush, bucket, mop, dustbin), sewing kit, hairdryer, beach games, board games... etc
The detailed list can be found in the annex.

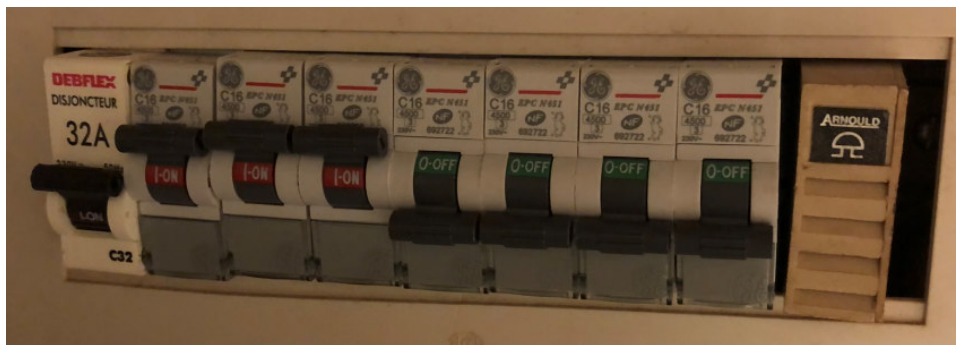


Use of equipment

- Electricity :

The electrical panel is located in the cupboard next to the television.

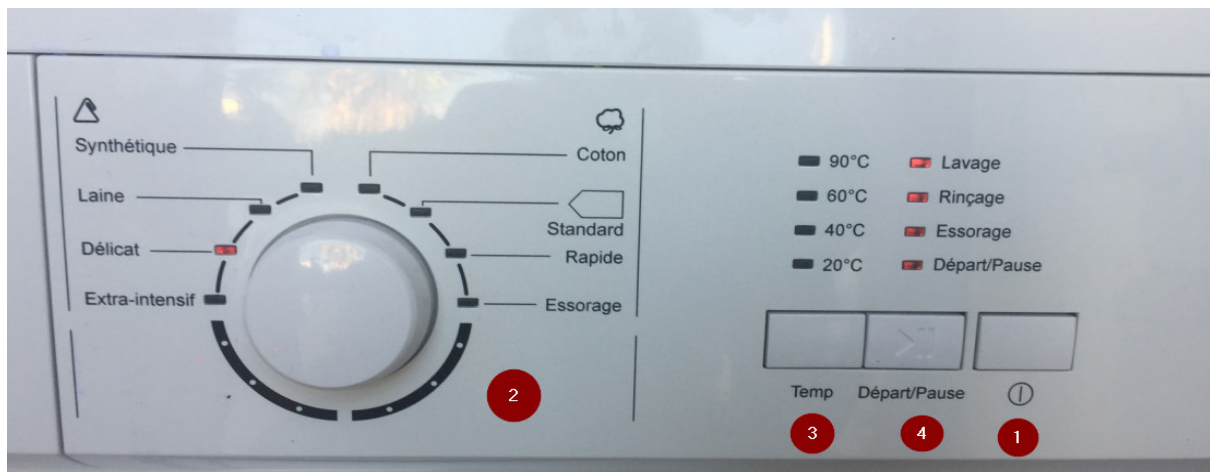
10	9	8	7	6	5	4	3	2	1	0
Water heater	light corridor	Oven	Sockets Living room	Outlets	Sockets Kitchen	Radiator	Radiator	Radiator	Radiator	Bell




0	Bell
1	Radiator
2	Radiator
3	Radiator
4	Radiator
5	Sockets Kitchen - to the right of the sink
6	Outlets
7	Sockets Living room and lounge - TV - Lighting Laundry room - Left-hand kitchen - Stove - Washing machine - Bedroom Port - Bathroom
8	Oven
9 (below)	Sockets and light corridor – bathroom – Room2
10 (below)	Water heater

- **Water:** In case of leakage, contact Véronique immediately (06 52 36 51 00) - You can also turn off the water supply (the tap is located under a slab after the gate of the terrace on the street side)
- **Hot water:** A water heater is installed in the ceiling above the stairs. No intervention is necessary, if you have no hot water check that the circuit breaker n°10 is not down, otherwise contact us.

Washing machine (more detailed instructions can be found in the living room dresser)



- 1 Button :** 
By pressing this button, you can switch the washing machine on or off.
- 2 Wash programme selection button :**
By turning this knob clockwise or counterclockwise, the wash clockwise or counterclockwise, you can select the wash cycle you wish to use.
By turning this knob clockwise or counterclockwise, you can select the wash cycle you wish to use. The following wash programmes are available
The following wash programmes are available: Synthetic, Wool, Delicate, Extra intensive,
Cotton, Standard cotton, Quick, Spin. Once you have pressed the
Once you have pressed the "Start / Pause" button and the washing machine is running, the choice of
Once you have pressed the "Start/Pause" button and the washing machine is running, the programme selection cannot be changed.
- 3 Temperature selection button :**
By pressing this button, you can select the wash temperature you wish to use.
For details, see the table on page 11. When all the temperature
When all the temperature indicators are off, the wash temperature is
is "cold".
- 4 Start / Pause" button :**
By pressing this button, you can start or stop a programme temporarily.
a programme. The light-emitting diode (LED) in the "Start / Pause" indicator
The LED in the "Start / Pause" indicator flashes when the machine is in standby or
paused mode, and remains on continuously when the machine is running.

- Oven : Press the panel to access the button.



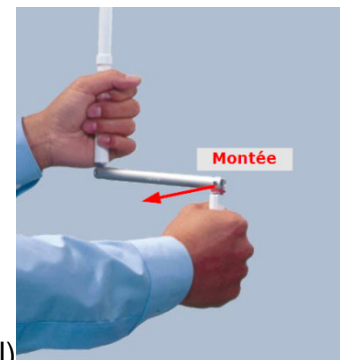
- Shutters: Be careful to turn the crank in the right direction and **stop turning when the shutter is down**, otherwise the shutter will eventually get stuck.

Lowering the shutter



(push)

Shutter lift (pull)



Rules & Regulations

We are aware that it is not very pleasant to be told what seems obvious to the good maintenance of a place to live, unfortunately by experience we know that it is sometimes necessary to remind it. You are at the marina as if you were at home: respect the furniture, utensils, appliances and linen provided for you as you would at home.

The PORT: For their safety, never leave your young children wandering around unattended on the quay and gangways.

Be careful not to lean against the white barrier on the harbour side as it is not solid at all (be careful that young children do not climb it).

Our accommodation is non-smoking.

Parties are not allowed. If there are too many people, the rental will be terminated without compensation.

No excessive noise pollution. You can of course dine on the terraces, but please do not play music as this would disturb the neighbours...

Please close the access gates to the marina after each use and lock the windows and doors when you leave the marina and turn off the lights.

Ladies, it is IMPERATIVE to NEVER throw your sanitary towels and tampons in the toilet, the drains are absolutely not intended for this use. Please use the waste bin.

The rubbish containers are located in the condominium opposite your parking space.

Leave the documentation, there is only one copy, the games and books put in place, this will be useful for the next tenant.

Please water the garden during your holiday if you see that the plants are thirsty.

Please respect the departure time and instructions.

Please remember to return all outdoor equipment to the place where you found it on your arrival (chairs, table, deckchairs etc.)

Put a towel on when you sit on the lounge mattress.

Practical information

Where can you go to shop?

To 50m : Bread, croissants, tobacco and small grocery shop (right at the crossing of the quay and the street)

To 300 m :Big Market (July and August) on Saturdays (8am to 1pm) at the Parking Gévaudan

To 600 m : Supermarket SPAR andButcher's shop/Caterer Chabert - Avenue des Alizés

To 800 m :Bakery and pastry shop « La Fournée Du Jour » - Street de la Gabelle

To 900 m :Butchery/Catering Raphael - Place Terrisse

To 7min by car : Supermarket LIDL - road GuiraudetteinAgde

To 7min by car : LIDL and INTERMARCHE - Boulevard René Cassin inAgde

To 7min by car : Hypermarket HYPERU - Boulevard Maurice Pacull à Agde

Where can you get fuel?

Nearby petrol stations:

To 2 min (500 m) by car : station TOTAL

To 7min by car : Hypermarket HYPERU - Bld Maurice Pacull in Agde

To 7min by car : INTERMARCHE - Bld René Cassin in Agde

Where can you get treatment?

Addresses and numbers of doctors and pharmacies on call:

650 m away: Pharmacie du Golf - Rue de Volvire de Brassac ☎ 04 67 26 30 00

15min walk: Pharmacie Richelieu - Place Terrisse ☎ 04 67 26 40 67

At 650 m : CABINET MEDICAL CAP2000 - Av des Isles d'Amérique

☎ 04 67 26 83 84

<http://www.medicap2000.fr/>

8 minutes by car: Centre Hospitalier du Bassin de Thau - Boulevard des Hellènes,

Agde ☎ 04 67 94 04 73 - www.ch-bassindethau.fr

1 hour by car: CHU Montpellier - 371 Av. du Doyen Gaston Giraud, Montpellier ☎04

67 94 04 73 - www.chu-montpellier.fr



Other service

A bus stop is located about 5 minutes away (Agde station/residence)

650 m away: Pressing Richelieu - Av des Isles d'Amérique ☎ 04 67 26 88 65

20 minutes on foot: Club Mickey 34 (Cap canaille) - Plage Richelieu ouest

Amélie FREY ☎ 06 48 44 89 15 - capcanaille34@gmail.com



Useful Numbers

- *Firebrigade: 18*
- *Police: 17*
- *Emergency services: 15*
- *European emergency call: 112*
- *Missingchildren: 116 000*
- *People with hearing or speech difficulties (SMS): 114*
- *SMS Montpellier UniversityHospital: 06 85 88 36 69*
- *Montpellier UniversityHospital:*
- *Adultemergencies: 04 67 33 95 00 - 04 67 33 81 68*
- *Gynaecological and obstetricalemergencies: 04 67 33 55 34*
- *Cardiological emergencies (day): 04 67 33 59 53*
- *Cardiological emergencies (night): 04 67 33 55 34*
- *Pediatricemergencies: 04 67 33 81 74 - 04 67 33 81 75*
- *Psychiatricemergencies: 04 67 33 22 93*
- *Head and neck emergencies: 04 67 33 72 59*
- *A.V.C. emergencies: 04 67 33 74 40*
- *Hand emergency : 04 67 33 95 04*

- *Taxi: www.agathtaxi.com ☎ 06 10 34 78 72*
- *VTC: www.vtc-capdagde.fr ☎ 06 34 62 69 58*

- *Tow truck: www.agdeassistanceauto.fr ☎ 04 67 94 86 81*
- *Tow truck: Chrono dépannagesremorquages ☎ +34 07 66 08 38 98*

- *Owner's number:*
 - Véronique ☎ 06 52 36 51 00*
 - LEFRANCOIS family ☎ 06 85 86 35 23*

Visit the region

Useful Information

At 750m : Cap d'Agde Méditerranée Tourist Office
Bulle d'Accueil, Impasse de la Bienvenue
☎04 67 01 04 04

Places to go

- A “pétanque” (a form of lawn bowling) court and a small, pleasant private beach, reserved for residents, are 3 minutes away on foot.
- International golf with 27-hole
- The most beautiful sandy beach of the Cape (Richelieu), also accessible on foot from the quays, is located 950m away.



- Water activities: Aqualand, Aquapark, boat rental, jet skis...



- Boat trips: to visit the Fort Brescou marine reserve, the coast, up the Hérault to the heart of the historic town of Agde and walks to Sète.



- *Exotic educational farm: India with Bengal cats and zebus, Mongolia: camels and yak, British Isles: Shetland ponies, Galloway cow, Scottish Blackface sheep. The United States: Quarter Horses, South America: llamas and alpacas. And many more. 210 Route de Marseillan, 34300 Agde
☎ 06 65 17 53 03*



- *Cruises on the Canal du Midi, the Etang de Thau with LES BATEAUX DU SOLEIL, 6, rue Chassefières à AGDE ☎ 04 67 94 08 79*



- *Since 1934, 200 winegrowers have been perpetuating the tradition of the first port of the Thau Basin - renowned for its white wines drunk with oysters, and its terrace rosés - by producing fine and fresh wines marked by the proximity of the sea.
LES CAVES RICHEMER à AGDE - www.richemer.fr ☎ 04 67 94 25 25*

Where to eat and drink and things to do



The harbourcentre is 600 m away, by the quays: restaurants, bars and entertainment, Ferris wheel, rides, etc.



The Barrière casino. The “île des loisirs” with all its rides, discotheques including the Amnésia, restaurants and showst.

Regional culture

- *The 20th century architecture of the Cap d'Agde resort - Accompanied discovery of Cap d'Agde
From 10 March to 29 September - Information from the Tourist Office*
- *Double visit : Saint-André and Saint-Sever : Let us tell you the history of the beginnings of Christianity in Agde, its high points such as the council of 506, its legends and anecdotes.
From 11 March to 30 September - Thursday - 10am
Departure from the Saint-André church square, 22T Rue Hoche, Agde*
- *Visit of the town of Agde and its medieval imprint
From 12 March to 24 September - Friday - 10am
Departure from Îlot Molière, Tourist Office, Agde*
- *Pézenas - Historical centre - City of fairs since the 13th century*

From the Tourist Office of Pézenas, place des Etats du Languedoc

- *Pézenas - In the footsteps of Molière*
From the Tourist Office of Pézenas, place des Etats du Languedoc
- **MONTAGNAC - A PLACE OF WINE DISCOVERIES**
26 centuries of history around the vine and wine!
www.ville-montagnac.fr/espace-vins-et-decouvertes ☎ 04 67 24 18 55

Savour local products and specialities from the Languedoc



- *Mussel brasucade (plancha)*
- *Mussels from Bouzigues*
- *Mussels à la sétoise*
- *Bourride d'Agde (white fish stew)*
- *Sardinade*
- *Fish soup à la sétoise*
- *La tielle (small octopus pie)*



- *Zézette de Sète (shortbread biscuit)*
- *The escalette (round, square or triangular cake)*



- *Muscat de Lunel*



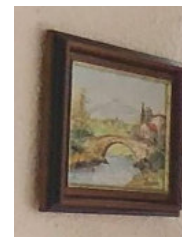
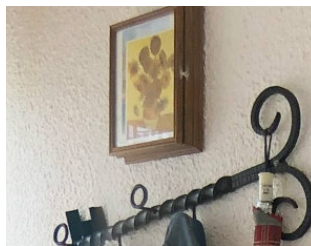
Richarde and Michel wish you a pleasant holiday
at the OPortoDuCap marina.



Annex

Living room

- TV : 230 €
- Paintings (6x): 40 €.
- Coat rack: 80€ (in French)
- Key box: 60 € (in French)
- Sofa bed: 230 € (in French)
- Lighting (3x) : 30 € (in French)
- Fan: €30
- Chairs (4x) : 70 € (in French)
- Table: € 200
- Tablecloth: 30 € (4x)
- Waffle iron: 50€ (in French)
- Moulinex food processor: €100
- Mixer: 80€ (in French)
- Citrus press: 15€ (French)
- Terracotta wine bucket: €40
- Board games: €60
- Sewing kit: €10



Kitchen

Cooking plate: 120 €.

Oven: €130

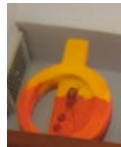
Microwave oven: 50 €.

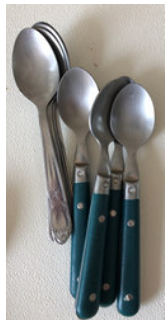
Kettle: €30

Vase: 30€ (for the kitchen)

Knick-knacks (3x): 20 €.

Dishes, cutlery, glasses etc..





Terrace - Beach games

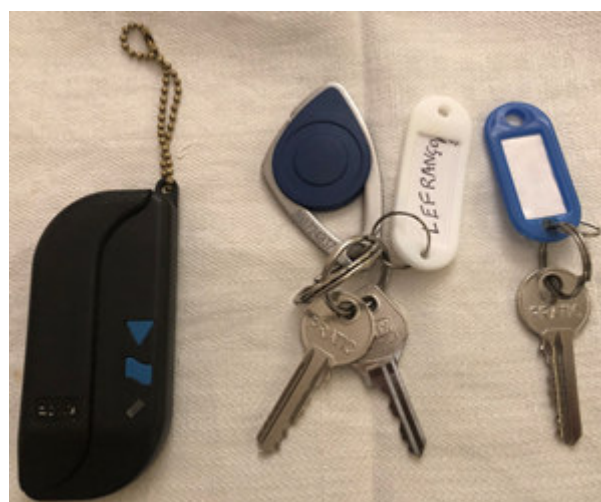
- Tablecloth: 30 €.
- Plancha: €50
- Iron: €30
- Coffee machine: €30
- Deckchair: 120
- Transat mattress: €40

Beach games : 20 €



Keys

- Remote control Island access gate: 80€.
- Token Gate to the island : 40 € (french)
- Street shutter key : 20 € (french)
- Street Door Key : 50 € (French)
- Laundry Door Key : 20 € (French)
- Laundry Door Key: €50



Various - Household - Maintenance

Hair dryer : 20 €
Bedroom light: €20
Bedroom fan (2x): €30

Clothesline: 40 € (for the bedroom)
Hoover: € 50
Broom
Broom
Bucket
Mop

